



Feast of St. Francis Webinar: Catholic Healthcare Sows Hope and Action for Creation

A joint webinar with Catholic Health
Association of the United States



October 29th, 2024



Feast of St. Francis Webinar: Catholic Healthcare Sows Hope and Action for Creation

RECORDING

The webinar is being recorded and a link to the recording will be sent to everyone who registered within the next 24-48 hours.

Questions

Please submit your questions in the Q/A box.

Chat

Please remember to be respectful and civil in all Chat interactions.

Prayer for Caregivers (**Catholic Health Association**)

Let us reflect on what it means to be a “healing presence.”

It is a call ...

To listen more than we speak

To remain calm even when others are in chaos

To stay clear and focused even when no clear direction is apparent

To value people exactly as they are and not as we think they should be

To be with people who are suffering, rather than trying to have all of the answers or explain that which ultimately is “mystery”

To let go of the temptation to show only the clinical and professional side and hold back the personal and human side of caring

Healing presence is not about doing something, it is about being present. And, when we enter this vulnerable state of simply *being* with another person who is in pain or in sorrow, we experience the healing power of God.

And so we pray ...

Good and gracious God,

You are the source of all healing. In you we have a share of the wonderful ministry we call “healing presence.” Today, we pray for caregivers, that your grace moves through each of them to reveal your healing touch, your compassionate glance, your consoling words. Bless them in a special way today and strengthen them so that they might continue to be your healing presence to others.

We ask this in the power of your Holy Name. Amen

Feast of St. Francis Webinar: Catholic Healthcare Sows Hope and Action for Creation



Indu Spugnardi
Senior Director, Community
Health & Eldercare
Catholic Health Association



Lois Sechrist
Manager of Sustainability
Ascension



Sr. Mary Ellen Leciejewski, OP
System Vice President
Environmental Sustainability
CommonSpirit



Kelly Paul
Supply Chain Director, Diversity,
Sustainability & Education
CommonSpirit

Moderator: Paz Artaza-Regan, Catholic Climate Covenant



Stewarding the Gift of Creation: A Mission and Health Imperative

**CCC AND CHA FEAST OF ST. FRANCIS WEBINAR: CATHOLIC
HEALTH CARE SOWS HOPE AND ACTION FOR CREATION**

Indu Spugnardi, Sr. Director, Community Health and Eldercare
October 29, 2024

2024

U.S. Catholic Health Care

The nation's largest group of not-for-profit health care providers

Caring for people and communities across the United States, with special attention to those who are poor, underserved and most vulnerable. By our service, we strive to transform hurt into hope.

EVERY DAY
MORE THAN
1 IN 7
PATIENTS
are cared for in a
Catholic hospital.*



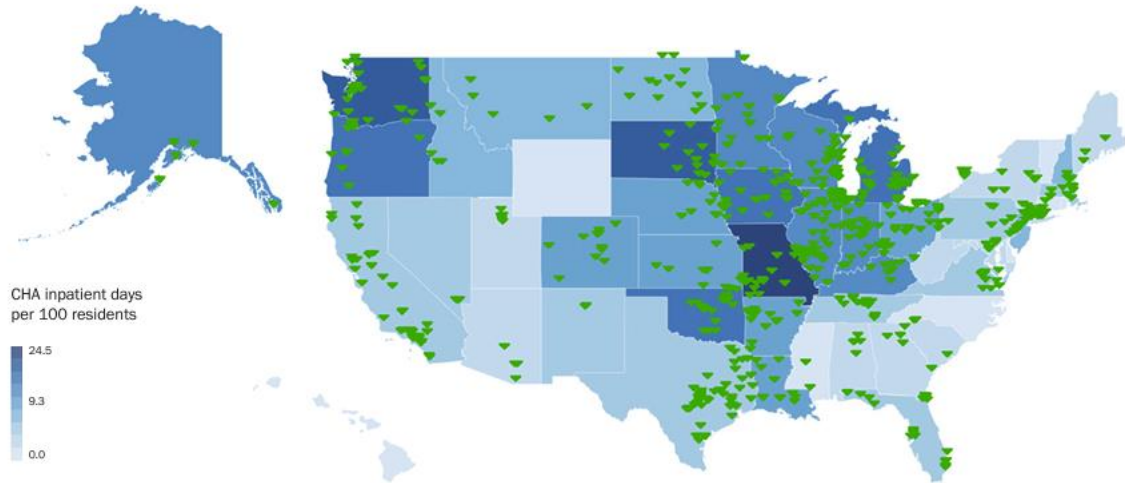
674
HOSPITALS†

136
Critical Access
Hospitals*

244
Trauma Centers*

COAST TO COAST

HOSPITAL LOCATIONS AND WHERE THEIR PATIENTS RESIDE



CHA inpatient days per 100 residents

24.5
9.3
0.0

HOSPITALS†

74% URBAN

26% RURAL

NEARLY 4.5 MILLION ADMISSIONS

to Catholic hospitals during a one-year period and 957,120 Medicaid discharges*



Over
101 MILLION
Outpatient
Visits*



Nearly
19 MILLION
Emergency Room
Visits*



Nearly
500,000 BABIES
were born in a
Catholic Hospital*



Operating
104
Care Clinics
in Underserved
Communities

Call for Emergency Action to Limit Global Temperature Increases, Restore Biodiversity, and Protect Health

Lukoye Atwoli, Abdullah H. Baqui, Thomas Benfield, Raffaella Bosurgi, Fiona Godlee, Stephen Hancocks, Richard Horton, Laurie Laybourn-Langton, Carlos Augusto Monteiro, Ian Norman, Kirsten Patrick, Nigel Praities, et al.

The greatest threat to global public health is the continued failure of world leaders to keep the global temperature rise below 1.5° C and to restore nature. Urgent, society-wide changes must be made and will lead to a fairer and healthier world. We, as editors of health journals, call for governments and other leaders to act, marking 2021 as the year that the world finally changes course.

As health professionals, we must do all we can to aid the transition to a sustainable, fairer, resilient, and healthier world. Alongside acting to reduce the harm from the environmental crisis, we should proactively contribute to global prevention of further damage and to action on the root causes of the crisis. We must hold global leaders to account and continue to educate others about the health risks of the crisis. We must join in the work to achieve environmentally sustainable health systems before 2040, recognizing that this will mean changing clinical practice. Health institutions have already divested more than \$42 billion of assets from fossil fuels; others should join them.⁴

Metrics

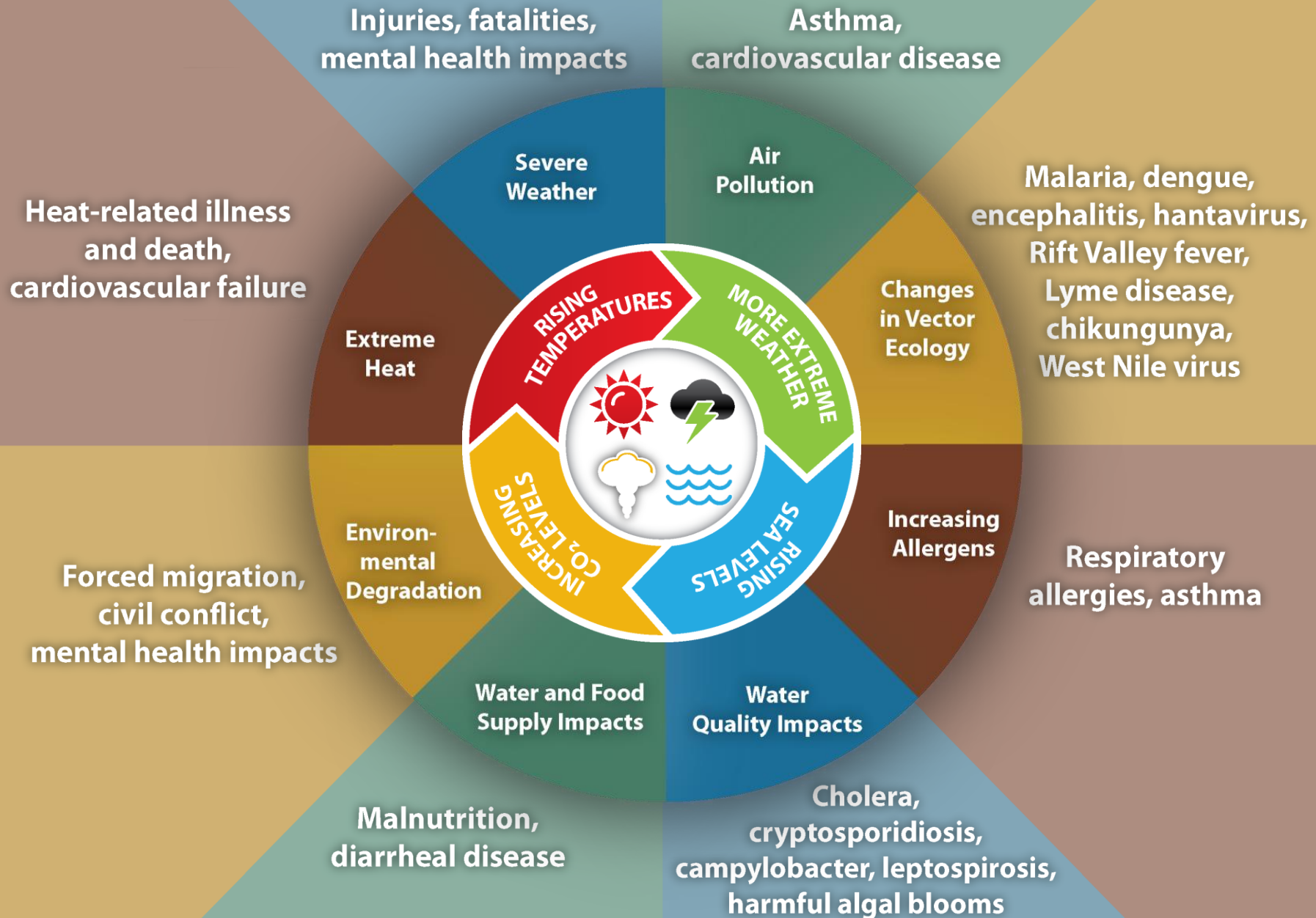
September 16, 2021

N Engl J Med 2021; 385:1134-1137

DOI: 10.1056/NEJMe2113200

An editorial published in 2021 by more than 200 journals worldwide warned of 'catastrophic harm to health that will be impossible to reverse.'

Impact of Climate Change on Human Health



COMMUNITIES OF COLOR

Some communities of color living in risk-prone areas face cumulative exposure to multiple pollutants.

Adaptation plans that consider these communities and improve access to healthcare help address social inequities.

OLDER ADULTS

Older adults are vulnerable to extreme events that cause power outages or require evacuation.

Checking on elderly neighbors and proper emergency communication can save lives.

CHILDREN

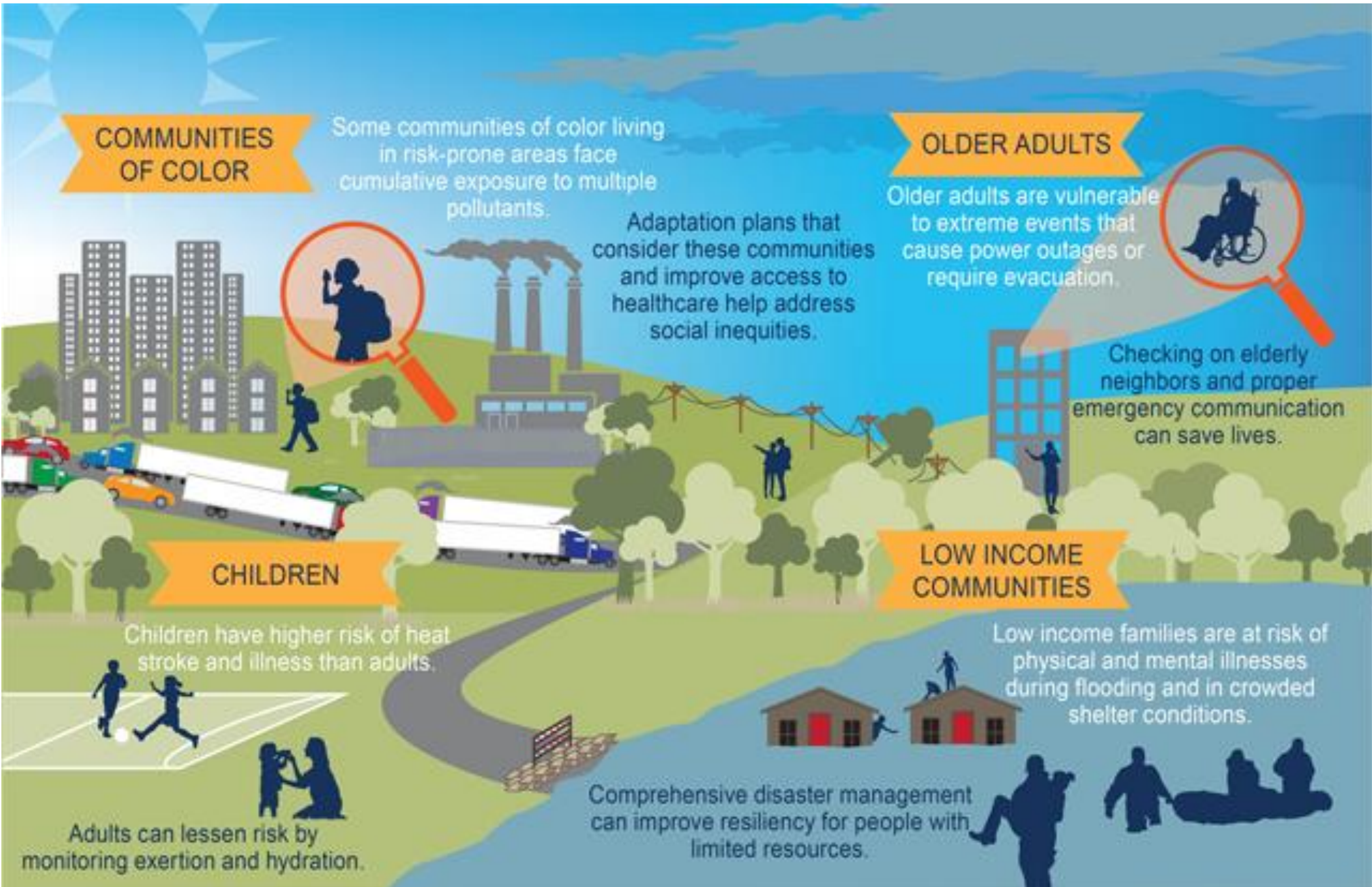
Children have higher risk of heat stroke and illness than adults.

Adults can lessen risk by monitoring exertion and hydration.

LOW INCOME COMMUNITIES

Low income families are at risk of physical and mental illnesses during flooding and in crowded shelter conditions.

Comprehensive disaster management can improve resiliency for people with limited resources.



Health Care's Impact on the Environment

- The U.S. health sector is responsible for an estimated 8.5% of national carbon emissions.
- The U.S. health sector accounts for 25% of global health sector emissions – the highest proportion attributable to any individual country's health sector.
- On average, U.S hospitals generate around 29 pounds of waste per patient per day.
- Hospitals use approximately 7% of all water use in commercial and institutional U.S. facilities.
- Large user of toxic chemicals

Decarbonizing the U.S. Health Sector – A Call to Action, December 2, 2021, *New England Journal of Medicine*

“The hidden harm of health care: air, water and other pollution”, Jonathan E. Slutzman, September 25, 2018, STAT

Provider Imperative

First Do No Harm

- Address our impact on the environment
- Help make our communities resilient to the impacts of the ecological crisis, particularly the most vulnerable who are disproportionately impacted
- Advocate for policy changes that limit fossil fuels, encourage the transition to renewable energy and build resilient public health and health care systems and communities.

Mission Imperative

Stewards of Creation

- Joyful appreciation for the God-given beauty and wonder of nature
- Protection and preservation of the environment, which would be the stewardship of ecological concern
- Respect for human life – shielding life from threat and assault, doing everything that can be done to enhance this gift and make life flourish

To Be a Christian Steward, A Summary of the U.S. Bishops' Pastoral Letter on Stewardship,
<https://www.usccb.org/committees/evangelization-catechesis/stewardship>

Laudato Si' Action Platform Goals and Health Care

1. **Cry of the Earth** – Reducing carbon emissions
2. **Cry of the Poor** – Climate resilience/adaption
3. **Ecological Economics** – Socially responsible investing, sustainable purchasing
4. **Sustainable Lifestyles** – Plant-based diets, food waste management
5. **Ecological Education** – Employee engagement and education
6. **Ecological Spirituality** - Feast of St. Francis celebrations/Responding to Laudato Si'
7. **Community Engagement and Participatory Action** – Advocacy for policies that support transition away from fossil fuels to clean energy (i.e. Inflation Reduction Act) and protect vulnerable communities

Building Climate Resilient Communities using the lens of health equity and environmental sustainability

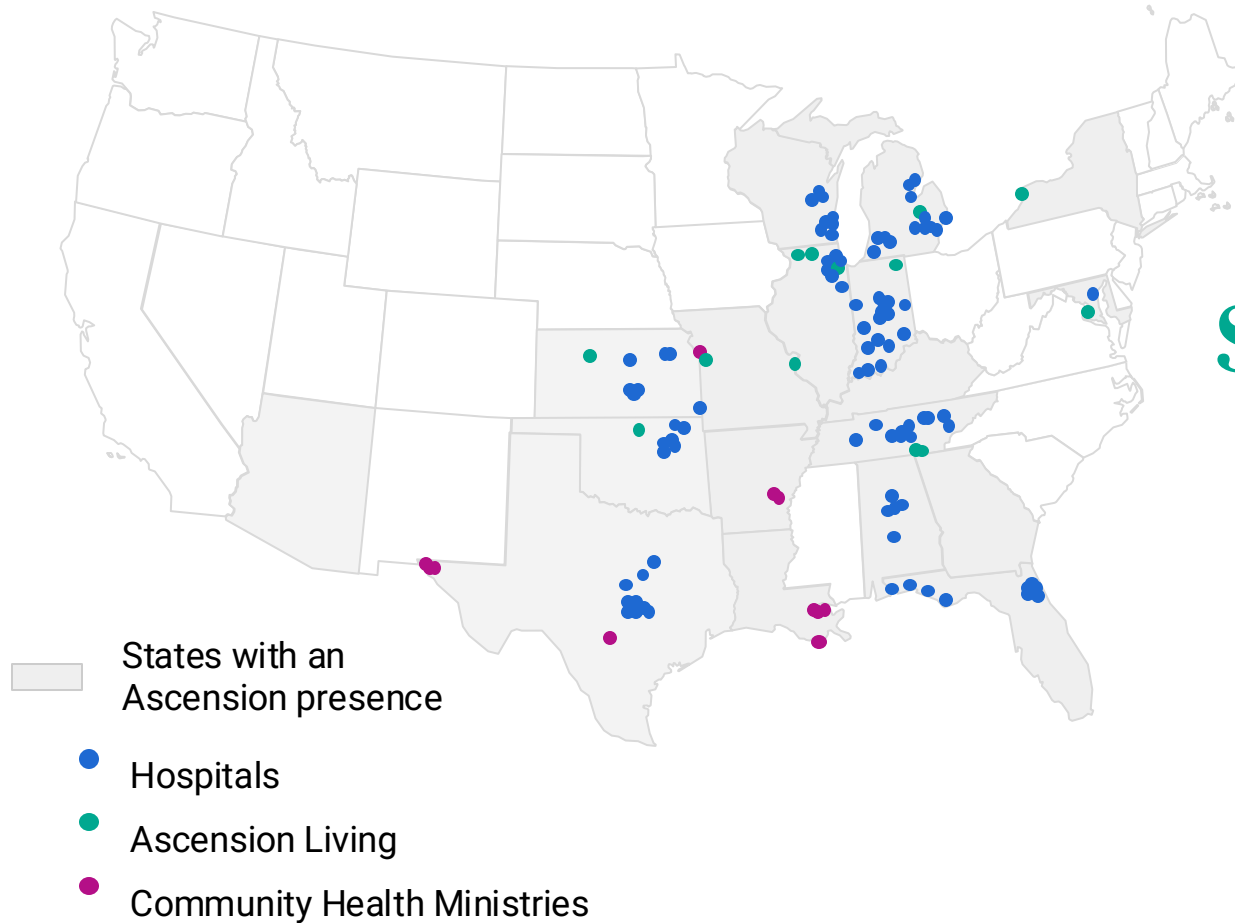
Lois Sechrist, LEED AP
Manager of Sustainability



Ascension

Listening to you, caring for you.®

Ascension Overview



Sites of care in
18 states
and the
District of Columbia

6.5 million
Unique persons served

\$28.3 billion
Total Operating Revenue

by 2040
Net zero carbon emissions
and zero waste by 2040

\$2.2 billion
in care of persons living in poverty and
other community benefit programs (FY23)

Our “WHY?”



*“Our Catholic ministry is dedicated to improve **spiritually centered, holistic care which sustains and improves the health of individuals and communities.**”*

*“...ensure **service that is committed to health and well-being for our communities** and that responds to the needs of individuals throughout the life cycle.”*

Environmental Impact & Sustainability Program Structure



Net Zero Places

focuses on carbon sources associated with physical environments – energy and water management, and mobility.



Responsible Supply Chain

focuses on the flow of goods from procurement through disposition after use – sustainable sourcing, product usage management, recycling and waste management.



Healthy Communities

Is the core of Ascension's program. It is focused on the relationship between sustainability and SDOH, linking to Ascension's Mission to sustain and improve the health of individuals and communities the ministry is privileged to serve.

Healthy Communities Focus Areas



Resiliency

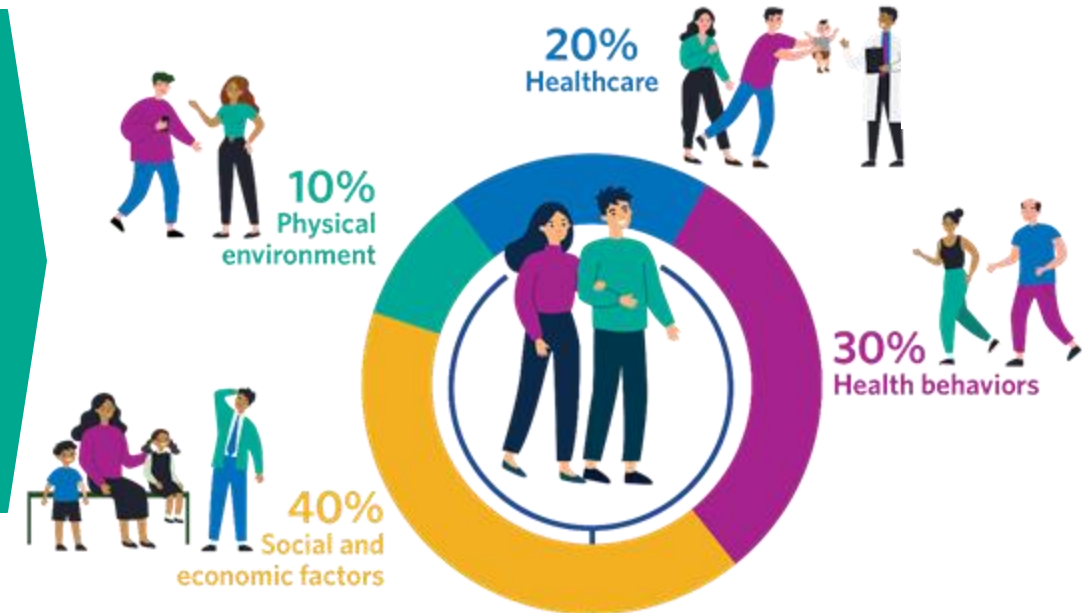
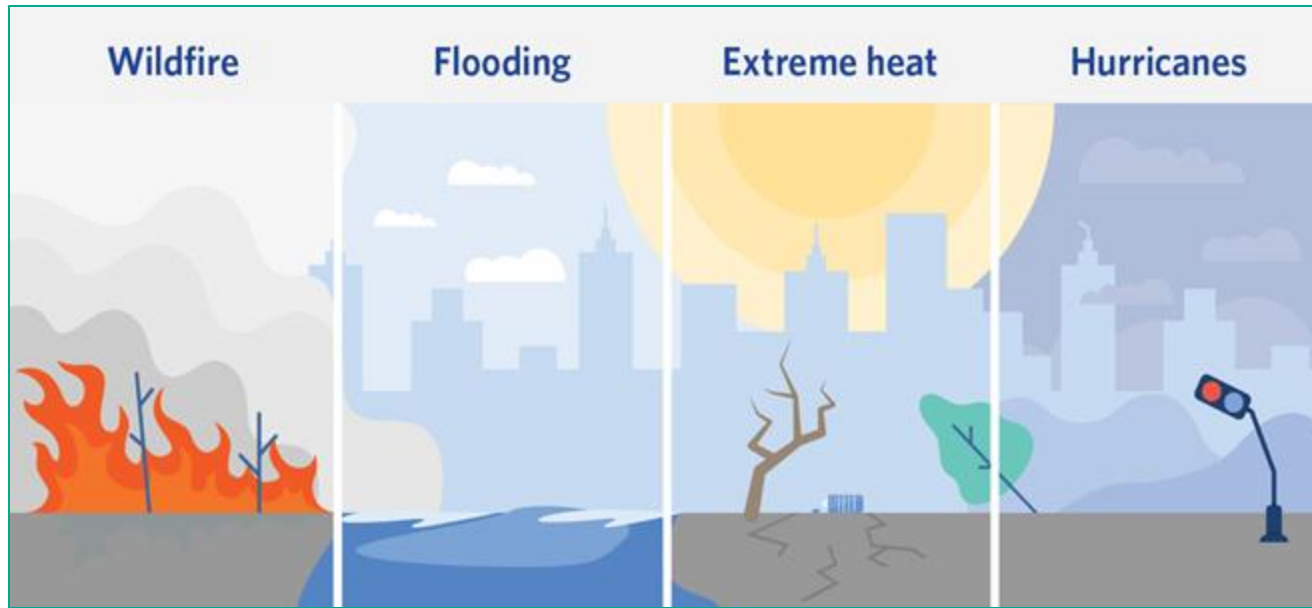


**Environment
& Health
Equity**



**Human
Flourishing**

Environment and Health Equity



Building Climate Resilient Communities using the lens of health equity and environmental sustainability



Infrastructure & Operations - Vulnerability Assessment & Remediation

Climate change is a threat to human health

Extreme Heat

Rising temperatures will lead to an increase in heat-related deaths and illnesses.

Flooding


Increased coastal and inland flooding exposes populations to a range of negative health impacts before, during and after events.

Mental Health and Well Being

Changes in exposure to climate- or weather-related disasters cause or exacerbate stress and mental health consequences, with greater risk for certain populations.

Health & Climate Resiliency Guides

1. Municipal Climate Action Plans
2. Key Contact Information
 - a. Mayor's Office & State Health Department
3. Health System's Emergency Preparedness Plan
 - a. Safety Director contact information
4. Health System's Community Health Needs Assessments
 - a. Community Benefit Manager contact information
 - b. CHNA website
5. Appendix
 - a. Additional resources & glossary of terms



Illinois Health & Climate Resiliency Template

Ascension signed the [U.S. Department of Health and Human Services' Health Sector Climate Pledge](#) in FY22. Ascension pledged to meet the administration's goal to reduce emissions by 50% by 2030, achieve net zero emissions by 2050 and develop a climate resilience plan. This Template is part of Ascension's climate resilience strategy.

Purpose of the Template: Provide Ascension markets with tools and recommended relationships to build to support groups that experience a disproportionate risk of climate-related effects. Resources include municipal climate action plans, Ascension's Emergency Preparedness Plan and Ascension's Community Health Needs Assessments. Recommended relationships to build include Mayor's Offices and state Public Health Departments. If needed, follow the instructions in each section to update this template for your market.

Municipal Climate Action Plan(s)

Find a municipality's website by using the [usa.gov](#) search tool or typing "City of [CITY NAME] Website" into an internet browser. Once on the city's website, ensure the link ends with ".gov." Confirm if a climate action plan is available by searching the website with these keywords: "Climate Action Plan," "Sustainability Committee" and "Climate Change." Fill in the information below about climate action plans in your market, and add more lines, if needed.

- City: Chicago
- Is a climate action plan available? (Yes/No)
- Link to the climate action plan: see [here](#).

Food Insecurity



80,000 served

11 states included

\$1.2 million invested



NEWS RELEASES

Ascension Joins White House Commitment to End Hunger by 2030

2/27/2024

Food Insecurity



- Farmers market pilot program created by Ascension Food Insecurity Workgroup and our food service provider
- Monthly “market” at hospital sites
- Fresh produce and high-quality seasonal food offered at reasonable prices to associates and visitors



Building Climate Resilient Communities using the lens of health equity and environmental sustainability

Learn more at

Ascension.org/Sustainability

Lois Sechrist

Manager of Sustainability

Lois.Sechrist1@ascension-external.org



CommonSpirit Health Sows Hope and Action for Creation

Sr. Mary Ellen Leciejewski, OP
System VP Environmental Sustainability

October 29, 2024

CommonSpirit's Commitment to Care

Mission

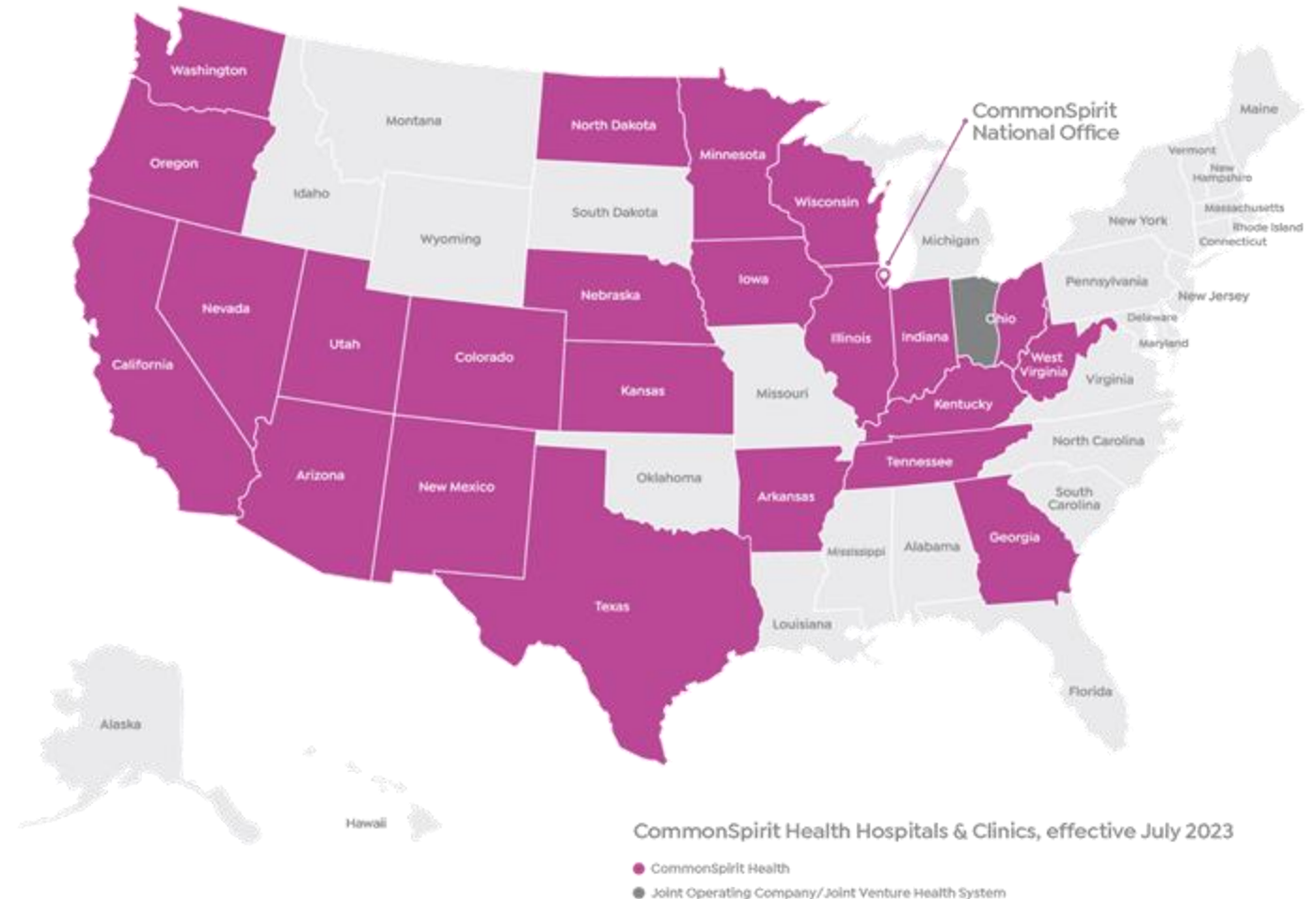
As CommonSpirit Health, we make the healing presence of God known in our world by improving the health of people we serve, especially those who are vulnerable, while we advance social justice for all.

Vision

A healthier future for all—inspired by faith, driven by innovation, and powered by our humanity.

Values

Compassion | Inclusion | Integrity
Excellence | Collaboration



150 hospitals | 2,200+ care sites | 150K+ employees
20M+ patient encounters | \$4.9B community benefit

Integral to CSH's mission and Catholic social teachings



WHY ARE WE ON THIS PATH?

Connection between climate and health



Healthcare's leadership role in society



Healthcare's footprint



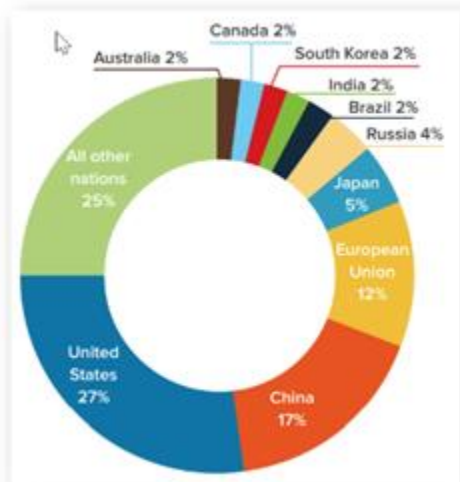
Running out of time



According to the 2019 Health Care's Climate Footprint report



Worldwide, the health care sector is responsible for as much as 4.6% of total greenhouse gas emissions.



27% of the world's health care-related greenhouse gas emissions came from the U.S.

Brief statements about the eight health-harming pathways of climate change ...

- Air pollution
- Extreme heat
- Extreme weather
- Vector-borne illness
- Water-borne illness
- Food-borne illness
- Hunger and malnutrition
- Mental health harms

...and who is most likely to be harmed

- Babies, children, pregnant women
- Seniors, people with certain chronic illnesses
- People in low-income and communities of color
- Outdoor workers



Climate change is the single biggest health threat facing humanity...While no one is safe from these risks, the people whose health is being harmed first and worst by the climate crisis are the people who contribute least to its causes, and who are least able to protect themselves and their families against it - people in low-income and disadvantaged countries and communities.

The World Health Organization



Climate Actions + Health Equity = Health Justice



Integral to CSH's mission and Catholic social teachings



WHY ARE WE ON THIS PATH?

Connection between climate and health



Healthcare's leadership role in society



Healthcare's footprint



Running out of time



Sowing Hope & Action for Creation

- Waste
- Toxic Chemicals
- Food
- Economic Growth
- Public Policy
- Resilience
- Daily Choices
- Greenhouse Gas Emissions



Committed to Net-Zero Emissions by 2040, 10 Years Ahead of the Paris Climate Accord



What is Net-Zero?

Net-zero by 2040 aligns with the Paris Accord goal of limiting global temperature rise to 1.5°C

It is a call to action for the all corporations and governments to:

1. Implement a robust climate action plan
2. Publicly report progress to drive accountability and inspire others
3. Focus on reducing emissions, using carbon offsets only for residual emissions

CAP Strategy Framework: Pillars and Enablers

To deliver on the net-zero by 2040 goal, CommonSpirit has developed a comprehensive strategy with three core pillars that sit atop the foundation of three key enablers.

I. Building and Operations Pillar

1. Building Performance
2. New Construction and Major Renovations
3. Renewable Energy Strategy

II. Supply Chain Pillar

1. Internal Assessment
2. Direct Vendor Engagement
3. Industry Collaboration

III. Climate Resilient Communities Pillar

1. Population Health
2. Community Health
3. Advocacy

IV. Enablers

A. GHG Data Reporting

B. Partnerships and Advocacy

C. Finance

Thank you

Mary Ellen Leciejewski, OP
maryellen.leciejewski@commonspirit.org



Addressing Climate and Health Impacts Through Purchasing and Supplier Engagement

Kelly Paul
Director, Diversity, Sustainability & Education

CommonSpirit's Scope 3 Goals

Scope 3 emissions comprised ~75% of CommonSpirit's 2019 GHG emissions footprint.

Three of CommonSpirit's most material Scope 3 categories are:



Milestone Goals:

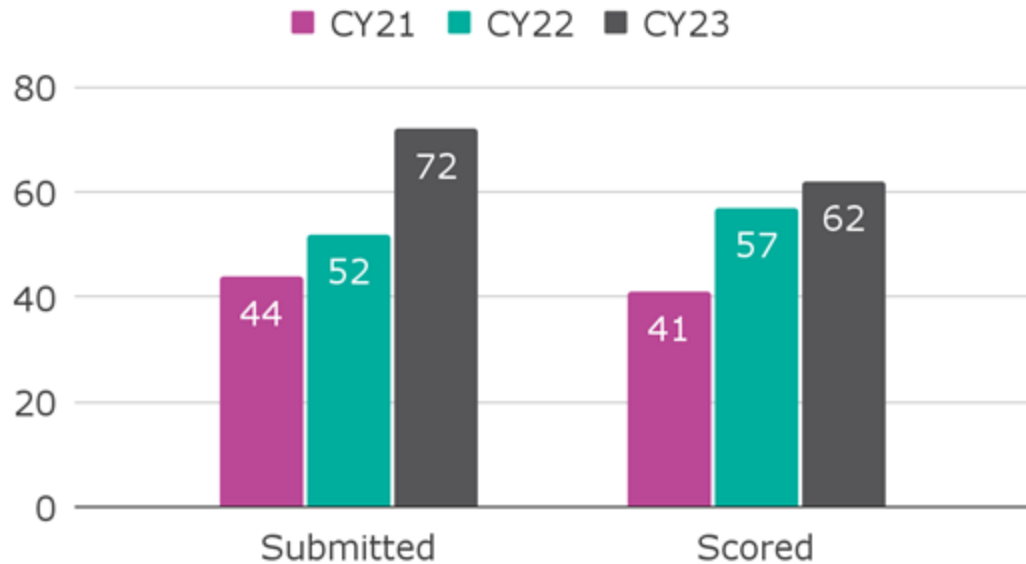
2025: Have **top 30 health care vendors commit to establish science-aligned targets** for reducing their Scope 1 & 2 emissions

2030: Engage **top 67% of vendors** (by GHG emissions) to **establish science-aligned targets** for their Scope 1 & 2 emissions

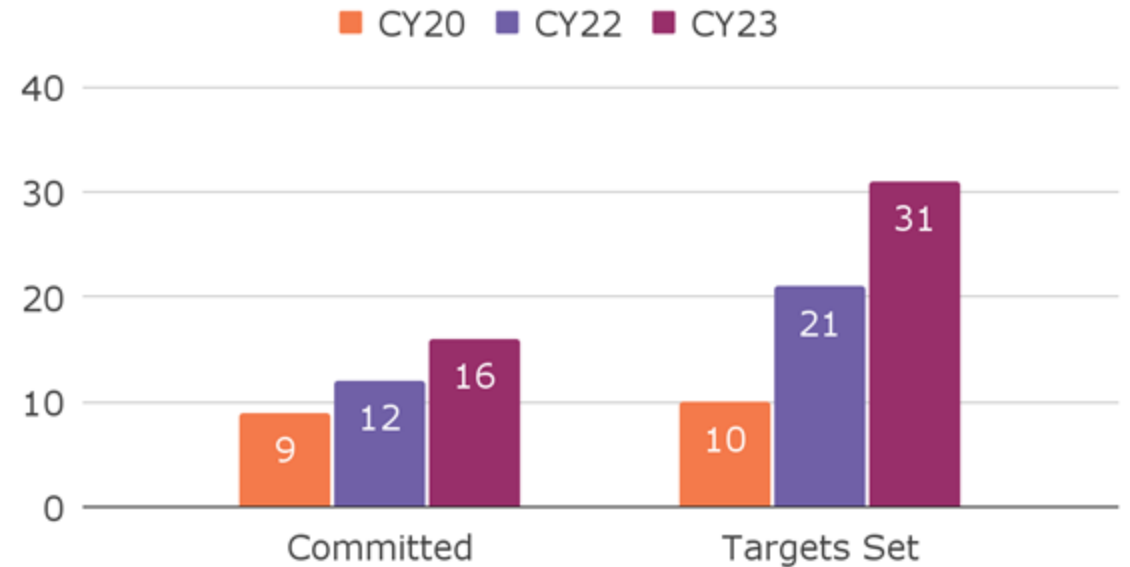
2040: Achieve at least **90% absolute reduction** in Scope 3 emissions

Supplier Climate Action Activity

CDP Disclosure



Science Based Targets



Data based on CommonSpirit's top 117 emitting vendors identified in:


- CY21 baseline data (CDP Disclosure)
- CY20 baseline data (Science Based Targets)

CDP status verified at [cdp.net](https://www.cdp.net), Science Based Targets status verified at sciencebasedtargets.org

Supplier Engagement

Of the vendors engaged to date, **100% response rate** to initial communications and questionnaire - through continual engagement - it takes persistence and partnership!

Challenge: Not all vendors are ready to take action - how do we help prepare more vendor partners to act?

CommonSpirit 

Greetings,


CommonSpirit Health has committed to reach net-zero greenhouse gas (GHG) emissions by 2040 and reduce our operational emission by 50 percent by 2030. As one of our key partners in delivering care, we invite you to join us on this important journey.

As you know, hospitals and the healthcare industry make up 8.5% of the U.S.'s greenhouse gas emissions, and supply chain (Scope 3) accounts for nearly 70% of healthcare's total emissions.

In order to achieve our net-zero goal, we have established CommonSpirit's Climate Action Plan (CAP), a comprehensive strategy with three core pillars: building and operations, supply chain, and climate resilient communities. We are beginning our work on Scope 3 emissions and ask that you:

- **Complete our [Climate Action Plan - Supplier Questionnaire](#):** Your responses will assist us in better understanding where our supplier partners are in regard to any climate-related transition plans, targets and goals, and to identify ways CommonSpirit Health can partner with suppliers to lead climate change in the healthcare industry.
- **Begin taking action:** Addressing climate change is a journey. If your organization has not already done so, begin with these steps:
 - Report environmental data to the [Carbon Disclosure Project \(CDP\)](#)
 - Commit to setting a science based target, or have your existing goals verified through the [Science Based Targets initiative \(SBTi\)](#)

At CommonSpirit, we are investing our resources to reverse the effects of climate change to better protect the health of the planet and the communities we serve. We are focused on delivering measurable GHG emissions reduction results through innovative partnerships with organizations like yours, and we look forward to your active participation in these efforts.

CommonSpirit 

CommonSpirit Supplier GHG Emissions Reduction - Resource 12 | Inflation Reduction Act Funding

Hello again!

At CommonSpirit Health, we're committed to achieving Net-Zero Greenhouse Gas Emissions by 2040 and are urging our suppliers to take action.

CommonSpirit Supplier GHG Emissions Reduction - Resource 13 | Inflation Reduction Act Tax Credits

To achieve our Net-Zero Greenhouse Gas Emissions by 2040, CommonSpirit Health urges all of its suppliers to align with science-based emission reduction targets and use the following resources on tax incentives from the Inflation Reduction Act to bolster their sustainability efforts. The following resources list energy-related credits and deductions for organizations to reduce renewable energy costs, lower GHG emission footprints, and accelerate the clean energy transition.

CommonSpirit Supplier GHG Emissions Reduction - Resource 10 | SBTi

In pursuit of Net-Zero Greenhouse Gas Emissions goal by 2040, CommonSpirit Health encourages its suppliers to adhere to science-based emission reduction targets and leverage the provided resources on federal funding from the Inflation Reduction Act to enhance their sustainability endeavors.

There are numerous grants to assist businesses in transitioning to solar energy, electric vehicles, and more. Before applying, applicants must have active registrations on both SAM.gov and Grants.gov. The process for new registrants may take a month or more, so starting early is advised. SAM.gov registrations also require annual renewal for active status maintenance.

NOTE: This email is part of a series of educational resources whose purpose is to offer support. The hyperlinked resources are for information purposes only. Unless you have specific questions, no response is needed. Thank you for your continued partnership and all that you're doing to safeguard our health and our planet.

Hyperlinked Resources	Sources	Descriptions
Grant Guide	EPA	Step-by-step guide for applying for Inflation Reduction Act grants.
Small Business Resource Guide	Green Business Network of Green America	List of resources by industry, IRA benefits by state, and additional small business resources based on region.

Sustainable Purchasing Solutions

- **Reusables:** Gait belts, isolation gowns
- **Reprocessing (collect and/or purchase):** Pulse Oximeters, ECG leads, lateral transfer devices
- **Recycling:** Sterilization wrap (Blue Wrap) collections
- **Chemicals avoidance:**
 - PVC/DEHP in breast pumps and accessories, exam gloves, IV bags and tubing
 - Inhaled anesthetic gases (nitrous oxide, desflurane)
 - 5 chemicals of concern in furniture & furnishings
- **Food:** Local & sustainable purchasing

The effort to identify and address opportunities is an ongoing process, involving many stakeholders, from our business units, clinicians and physicians.

Collaboration is Key



Thank you.

Feast of St. Francis Webinar: Catholic Healthcare Sows Hope and Action for Creation

For more information: info@catholicclimatecovenant.org

